

Description of Porsche Wireless CarPlay Decoder

table of Contents

- **1. Product Description**
 - 1.1 Product Introduction
 - 1.2 Hardware wiring diagram
 - 1.3 Vehicle dialing table
- **2. Product function catalog**
 - 2.1 Wireless/Wired Carplay function introduction
 - 2.2 Wireless/Wired Android Auto function introduction
 - 2.3 Wireless AirPlay/Wired Autolink function introduction
 - 2.4 Introduction to USB HD playback
 - 2.5 Introduction to Firmware Upgrade
- **3. Reverse setting instructions**
 - 3.1 Carplay setting reverse function introduction

Product manual

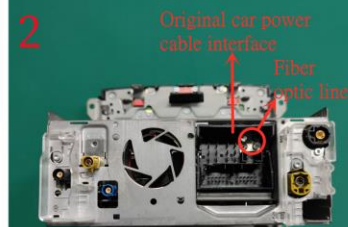
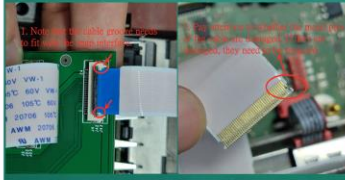
1.1 Product Features

1. Support wireless/wired CarPlay function adjustment
2. Support wired Baidu Carlife function
3. Support wireless Airplay function
4. Support wireless/wired Android auto function
5. Support wired Autolink function
6. Support USB to play video
7. Support HDMI video input display
8. Support lossless sound quality, perfect presentation, EQ
9. Support reversing radar and track display
10. Supports foresight input, exits the reverse and automatically switches to foresight, with optional lead time
11. Support to adjust the microphone sound quality
12. Support user firmware upgrade
13. Support boot logo and icon logo modification

1.2 Hardware wiring diagram

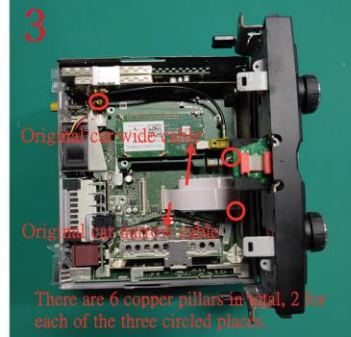
Please pay attention to when installing cables.

1. Note that the cable groove needs to fit with the strap interface.
2. Pay attention to whether the metal pins of the cable are damaged. If they are damaged, they need to be replaced.



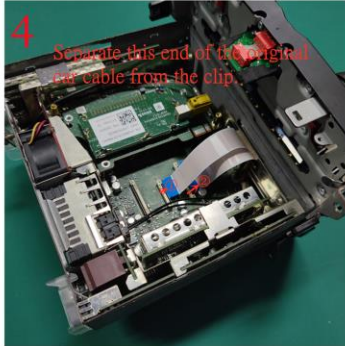
2. Original car power cable interface
Fiber optic line

Notice:
1. Please unplug the original car power cord first, and then connect the small board cable.
2. If the male head of the original car power cable has an optical fiber cable, you need to transfer the optical fiber cable to the male head of the carplay power cable.



3. Original car wide cables
Original car power cables

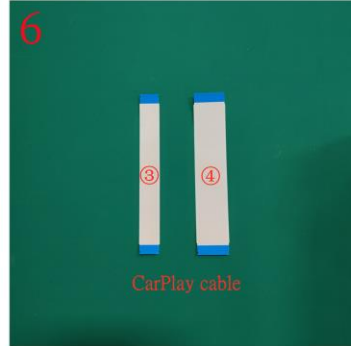
There are 6 copper pillars in total, 2 for each of the three circled places.



4. Separate this end of the original car cable from the clip.



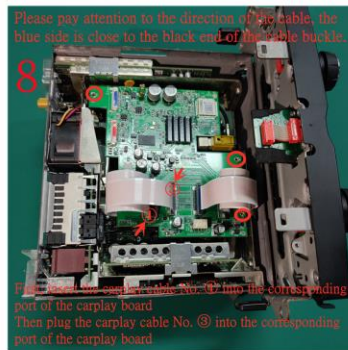
5. Insert the two unplugged original car cables into the CarPlay board



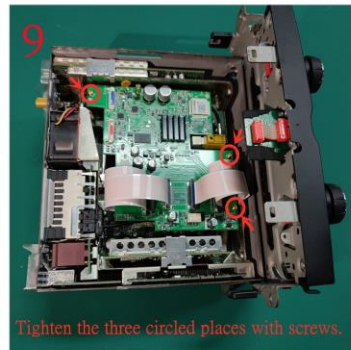
6. CarPlay cable



7. Insert the CarPlay cables ③ and ④ into the original car interface



8. Please pay attention to the direction of the cable, the blue side is close to the black end of the cable buckle.
Insert the CarPlay cable No. ③ into the corresponding port of the carplay board.
Then plug the carplay cable No. ④ into the corresponding port of the carplay board.

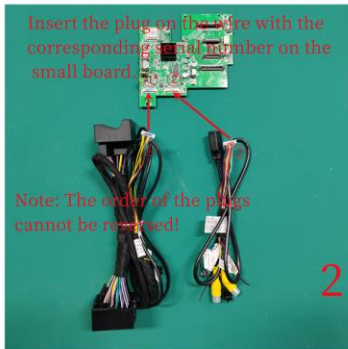


9. Tighten the three circled places with screws.



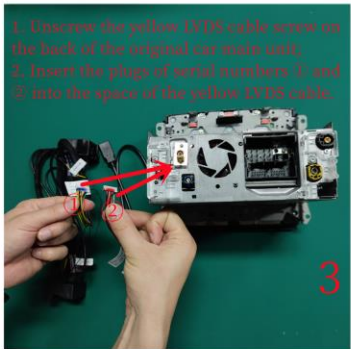
Porsche PCM3.1 integrated board

Note:
1. Only need one set of wide cable A and narrow cable a.
2. The other group B and b are spares.

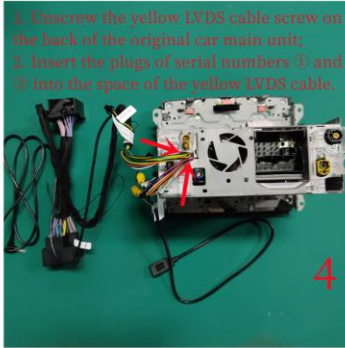


2. Insert the plug on the wire with the corresponding serial number on the small board.

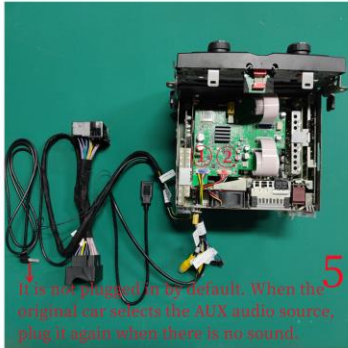
Note: The order of the plugs cannot be reversed!



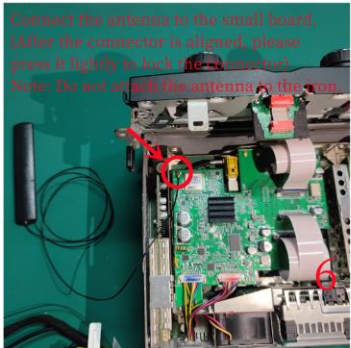
3. 1. Unscrew the yellow LVDS cable screw on the back of the original car main unit.
2. Insert the plugs of serial numbers ① and ② into the space of the yellow LVDS cable.



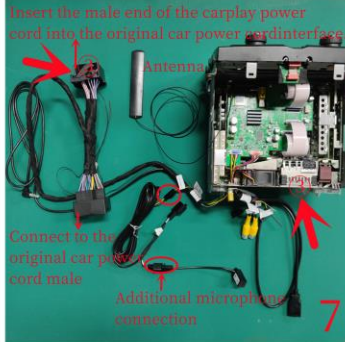
4. 1. Unscrew the yellow LVDS cable screw on the back of the original car main unit.
2. Insert the plugs of serial numbers ① and ② into the space of the yellow LVDS cable.



5. Connect the antenna to the small board. (After the connector is aligned, please press it lightly to lock the connector.)
Note: Do not attach the antenna to the front.
It is not plugged in by default. When the original car selects the AUX audio source, plug it again when there is no sound.



6. Connect the antenna to the small board. (After the connector is aligned, please press it lightly to lock the connector.)
Note: Do not attach the antenna to the front.



7. Connect the male end of the carplay power cord into the original car power cord interface.
Additional microphone connection



8. The default is not plugged in, which is defined as a 7-inch screen display. After plugging in, it is defined as a 8.8-inch screen display.



9. Porsche PCM3.1 integrated board Finish

Product Function Catalog

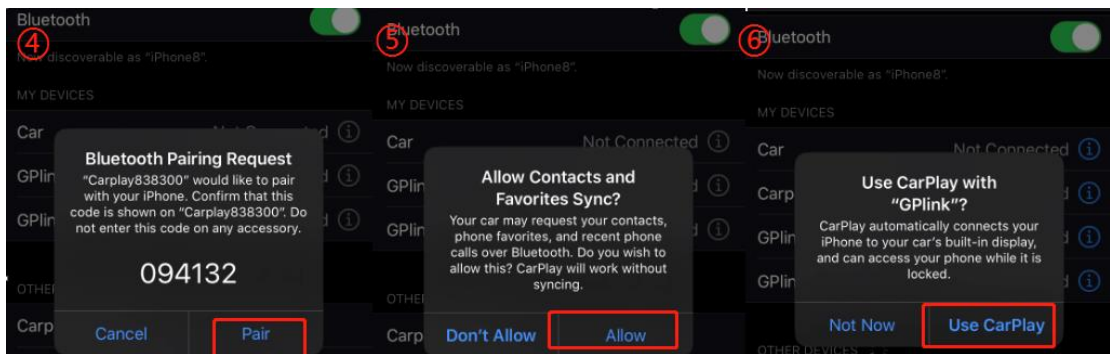
2.1 Wireless/Wired Carplay function introduction

CarPlay is an Apple system that interconnects a user's Apple phone with a car machine. The connection methods are wireless and wired.

Wireless carplay connection method: mobile phone connection and car machine connection

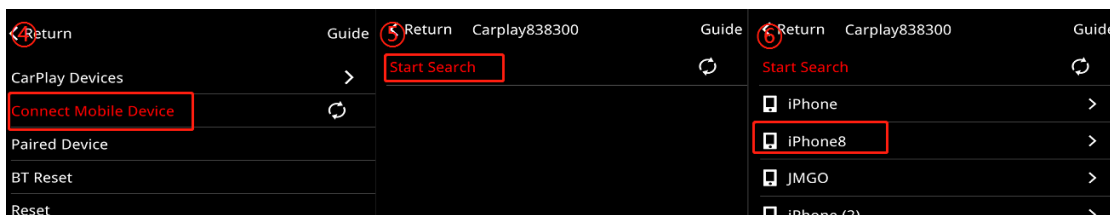
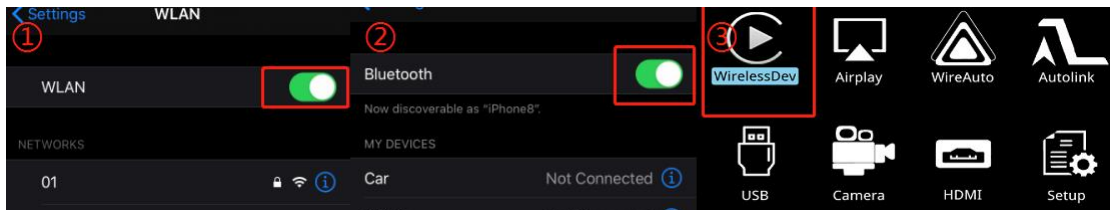
Wireless carplay mobile terminal pairing connection steps:

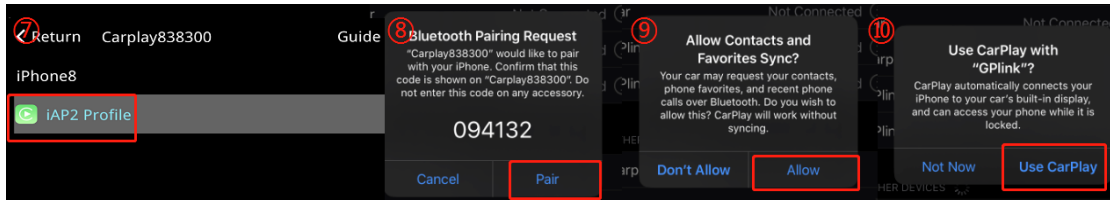
1. Press the menu key to enter the carplay main interface
2. Turn on WiFi on the phone
2. Turn on Bluetooth on the mobile phone
3. Bluetooth endpoint search
5. The decoder Bluetooth device (carplayxxxx) is found
6. Click on the mobile phone to search for Bluetooth devices and select point pairing in turn, allow, use carplay



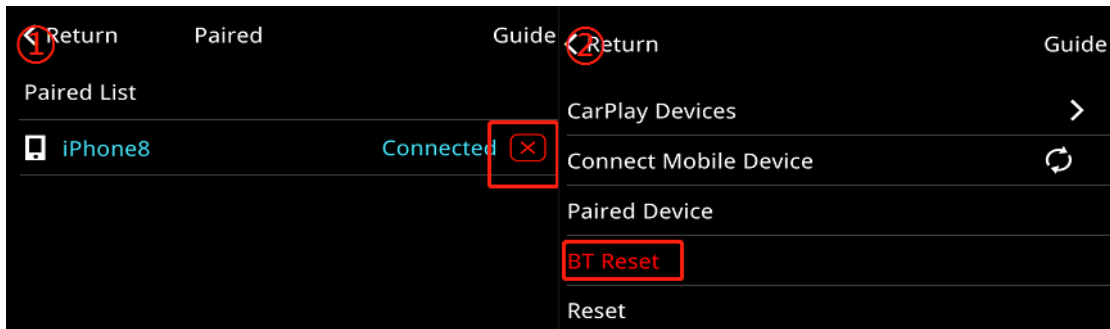
Wireless carplay car terminal pairing connection steps:

1. Turn on WiFi on the phone
2. Turn on Bluetooth on the mobile phone and stay in the Bluetooth interface
2. Open the car and enter WirelessDev
3. Enter the device search on the car side
5. The mobile device searches for the mobile phone Bluetooth device (carplayxxxx) and pairs
7. Select point pairing in turn on the mobile phone, allow, use carplay





If the wireless carplay fails to connect: 1. Tap the carplay Bluetooth or wifi on the mobile phone 2. Clear the Bluetooth devices on the mobile phone and the car, and then pair the connection (as shown in Figure ①) 2. Go to WirelessDev to reset the Bluetooth , And then pairing connection (as shown in Figure ②) 3. Go to the mobile phone to restore the mobile phone network 5. Check whether the carplay on the mobile phone is turned on (settings-screen time-content and privacy access permissions-allowed apps) 6.siri Whether the permissions are all open 7 Check if there is a problem with the antenna if necessary



Wireless CarPlay disconnection method: mobile phone terminal disconnection and car terminal disconnection

Disconnect the mobile phone: directly turn off the wifi of the mobile phone. Disconnect the mobile phone: enter WirelessDev---device management, click the connected mobile device

Wired CarPlay connection method:

1. First, open the siri permission in the settings of the mobile phone 2. Check whether the carplay on the mobile phone is turned on (settings-screen usage time-content and privacy access permissions-allowed apps) 2. Insert the end of the Apple data cable into the USB on the decoder Online, plug the other end into the mobile phone charging port 3. The mobile phone pops up to allow the use of carplay, select "Allow", and select "Use USB only" in the next step

Carplay operation method:

1. To move between carplay icons, you need to use left and right rotation (knob: left or right; joystick: Left or right; touchpad: slide left or right) 2. The up and down song on the steering wheel can control the up and down song function in the music app in carplay 2. Short press the voice button on the steering wheel to wake up the siri voice of carplay (Or long press the confirmation key 5S at any interface of carplay to wake up siri voice) 3. Short press the phone key on the steering wheel to connect the call

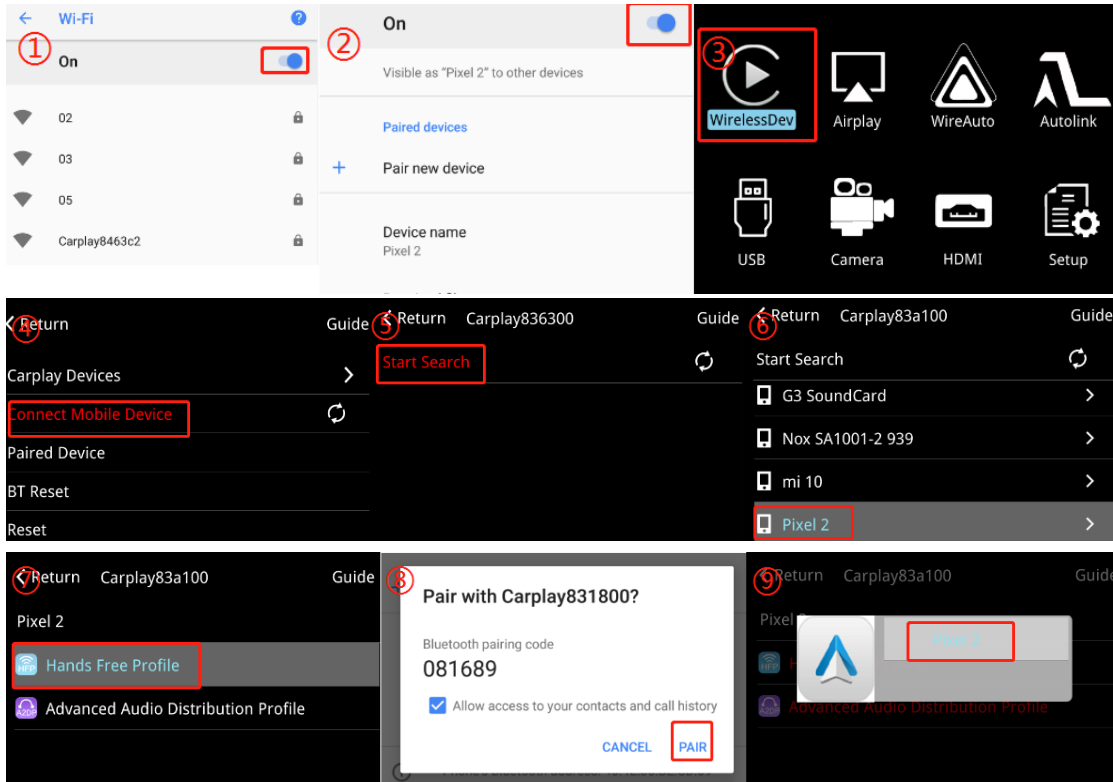
2.2 Wireless/Wired Android Auto function introduction

Android [Auto](#) is Android function specially designed for cars launched by Google; before using it, please go to the Google play store, download the Android Auto APP, and install it; after successfully installing the Android Auto APP, open this APP, and you will be prompted to download Install Google play music, Google map, Google search, Google text-to-speech, etc. Currently only Google phones and

Samsung's new phones support the wireless Android Auto function

Wireless Android Auto connection steps:

1. Turn on WiFi on the mobile phone
2. Turn on Bluetooth on the mobile phone, and stay on the Bluetooth interface
3. Select the car and enter the Wireless Dev APP
4. Enter the Bluetooth search interface on the car and machine
5. Search for the car and machine endpoint
6. Car and machine Select and enter the searched device at the end of the vehicle
7. Choose any one of the items on the vehicle end to perform pairing
8. A pairing request pops up on the phone end, select pairing
9. A connection dialog box appears on the end of the vehicle end, press the enter key to enter



Wireless Android Auto connection steps:

1. Select the WireAuto APP on the car terminal
2. Enter the WireAuto connection interface
3. The decoder and the mobile phone are connected via a USB cable

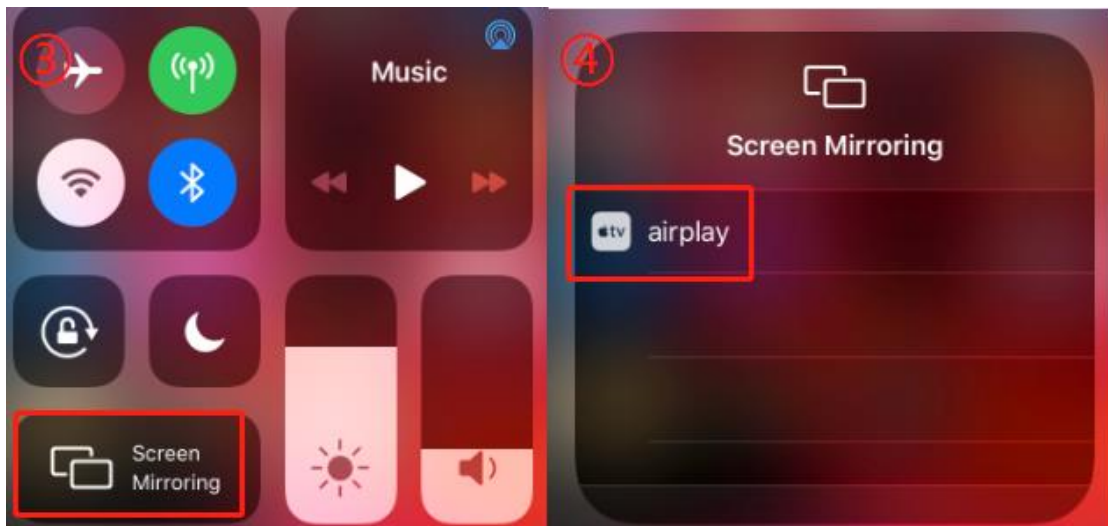
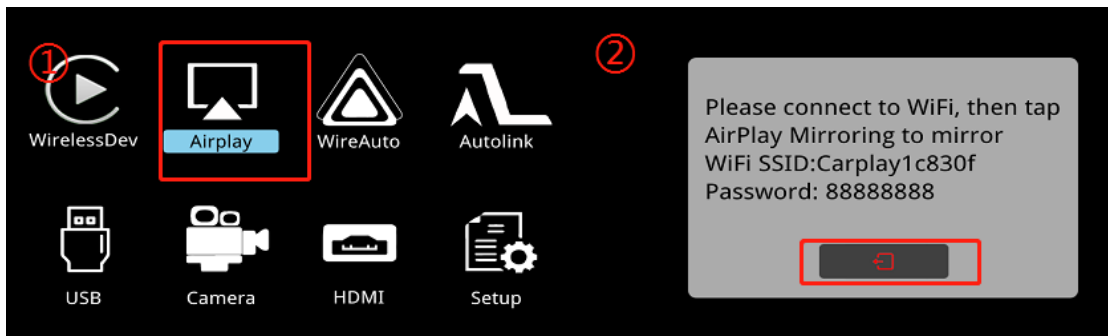
Android Auto operation method:

Car machine terminal operation, use the knob, up, down, left and right keys and return key operation

2.3 Wireless AirPlay/Wired Autolink function introduction

Wireless airplay connection steps:

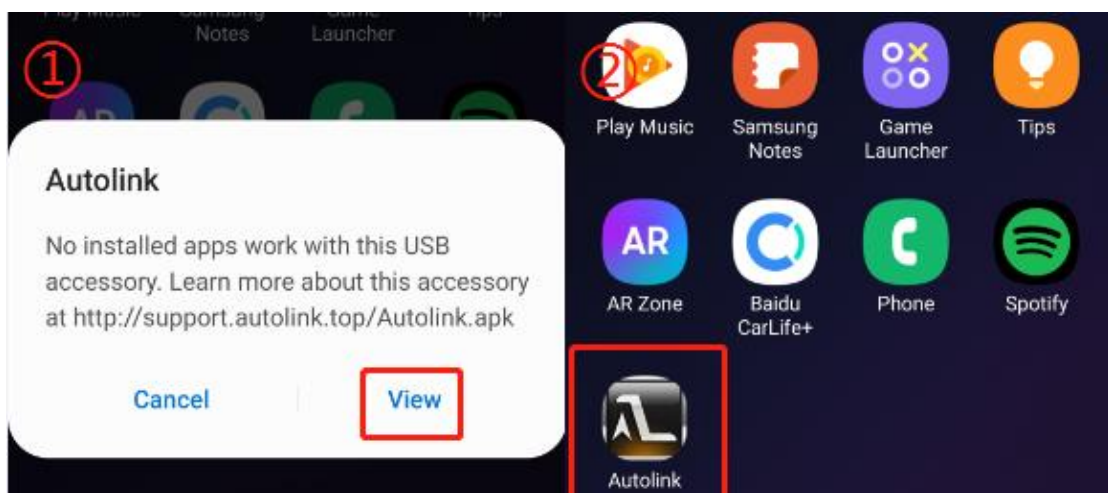
1. Click and enter the main interface Airplay interface
2. The mobile terminal opens WiFi
2. The mobile terminal searches for the decoder WiFi name and enters the password
2. The mobile terminal slides the screen up and down and finds the screen mirror in the task bar
3. Click on the connection to search for WiFi device



Airplay operation method: mobile phone operation

Wired Autolink connection steps:

1. Click and enter the main interface **Autolink** interface
2. Insert one end of the Android mobile phone data cable into the USB cable on the decoder and the other end to the charging port of the mobile phone
3. The mobile phone prompts and enters the browser to download the Autolink APP and install it (as shown in the figure 1)
4. Insert the Android phone data cable into the decoder USB
5. At this time, go to the mobile phone and select all the prompt permissions to open (as shown in Figure 2)
6. Unplug the data cable



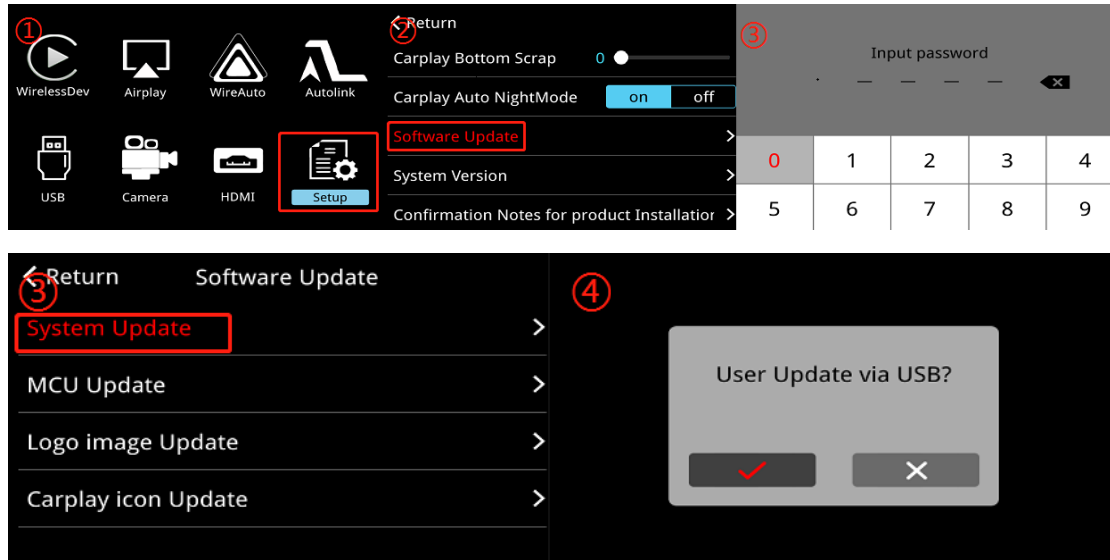
2.4 Introduction to USB HD playback

First insert the U disk with video and music, then click and enter the USB interface of carplay main interface. USB currently only supports video and music functions.

2.5 Introduction to Firmware Upgrade

Carplay upgrade steps:

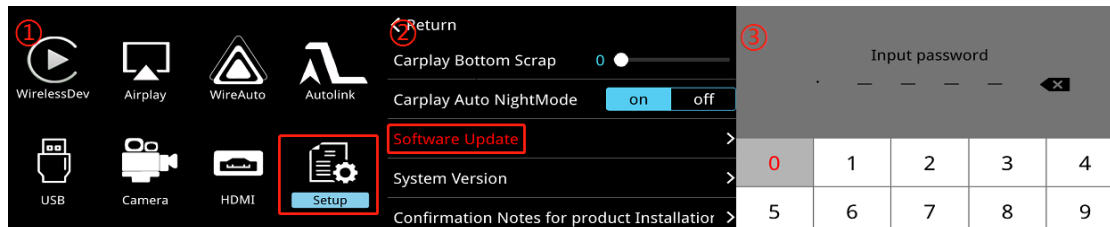
1. Copy the carplay upgrade file "ISPBOOT.BIN" to the root directory of the U disk 2. Insert the U disk into the USB interface of the decoder 2. Enter the settings of the installation interface 3. Select and enter the user upgrade in the settings menu 5 .Enter the corresponding password 6. Enter the user upgrade interface, select system upgrade 7. After the upgrade dialog box pops up, select "v" to enter upgrade mode 8. The entire upgrade process needs to wait for about two minutes



Carplay forced upgrade method: 1. Copy the upgrade file "ISPBOOT.BIN" to the root directory of the U disk 2. Insert the U disk into the USB interface of the decoder 2. Power on the car, press the MENU button for 12 seconds to enter the upgrade within ten seconds Mode (old software: After the car is powered on, press and hold the back button for 5-8 seconds to enter the upgrade mode)

MCU upgrade steps:

1. Copy the MCU file "Upgrade.BIN" into the root directory of the USB flash drive 2. Insert the USB flash drive into the USB interface of the decoder 2. Enter the installation interface settings 3. Select and enter the user upgrade in the settings menu 5 . Enter the corresponding password 6. Enter the user upgrade interface, select MCU upgrade 7. After the upgrade dialog box pops up, select "v" to enter upgrade mode 8. The entire upgrade process needs to wait about one minute 9. Long press the MENU button to switch to carplay Install the interface, wait for the main interface before you can unplug the U disk

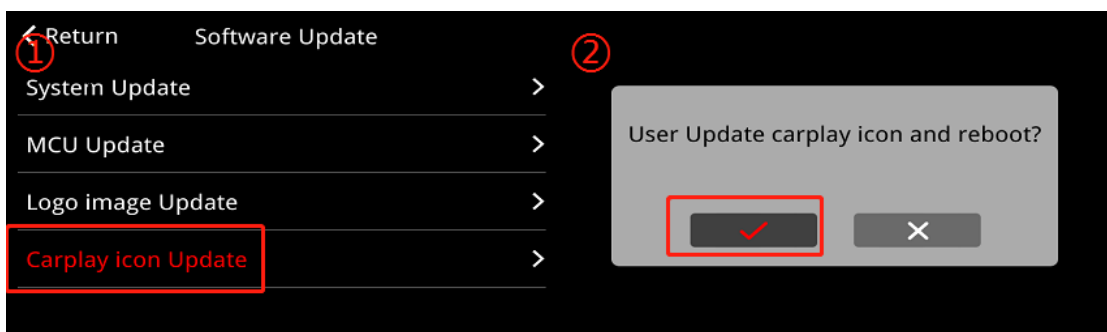




MCU forced upgrade method: 1. Copy the MCU file "Upgrade.BIN" file into the root directory of the U disk, and then copy a recovery110# file with no suffix to the root directory of the U disk 2. After the car is powered on, press and hold the MENU button Cut to the carplay interface in about 3 seconds and wait to see the main interface 2. Insert the U disk into the USB interface of the decoder 3. At this time, it will automatically enter the upgrade mode

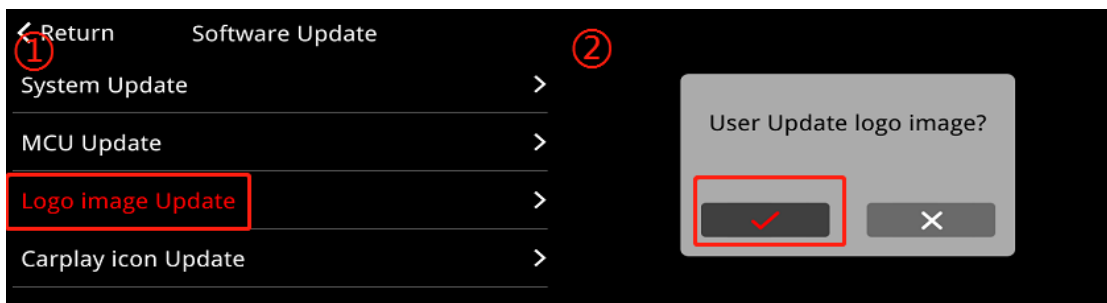
Carplay icon upgrade steps:

1. Copy the 250x250 "cp_back.png" upgrade image file into the root directory of the U disk 2. Insert the U disk into the USB interface of the decoder 2. Enter the settings of the installation interface 3. Select and enter in the settings menu User upgrade 5. Enter the corresponding password 6. Enter the user upgrade interface, select the carplay icon to upgrade 7. After the upgrade dialog box pops up, select "v", at this time you can see the decoder restart



Carplay boot logo upgrade steps:

1. Copy the 24-bit color image "logo.bmp" image file of the upgrade file 800x480 into the root directory of the U disk 2. Insert the U disk into the USB interface of the decoder 2. Enter the settings of the installation interface 3. In the settings menu Select and enter the user upgrade in 5. Enter the corresponding password 6. Enter the user upgrade interface, select the startup screen to upgrade 7. After the upgrade dialog box pops up, select "v" 7. Restart the decoder startup screen to take effect



Reverse setting instructions

3.1 Carplay setting reverse function introduction

Reversing camera: sub-decoder reversing and original car reversing, the default is the original car reversing;

1. The original car comes with a reversing camera: go to Settings-Reversing-Camera Reversing Choose to reversing in the original car
2. Add a reversing camera: go to Settings-Reversing-Reversing camera selection in the decoder reversing

Install camera connection method:

method 1:

1. The camera CVBS output is directly inserted into the rear view interface
2. 12V rear view connected to the camera's power supply
3. Carplay setting option to change the reversing setting to decoder reversing

Method 2:

1. The camera CVBS output is directly inserted into the rear view interface
2. 12V rear view connected to the camera's power supply
3. Reversing detection line connected to car taillight power supply
4. Carplay setting option to change the reversing setting to decoder reversing
5. Carplay setting option changed the rear line check to on

Front camera display time:

You can set the front display time 0-15 seconds, the default is 0 seconds

Carplay decoder front view interface: support rear-mounted camera (camera power supply connected to 12V rear view), driving recorder (driving recorder power supply connected to 12V ACC), etc.

4.1 Functions of the buttons on the central control panel



PHONE(①): long press for 3S to switch long press for 12 seconds to force the upgrade mode

INFO(②): long press for 3S to switch

Return button (③): Short press is for return, long press for 8S to restart the carplay decoder

Front view button (④): long press to enter the front view installation

Confirm button (⑤): short press to confirm function, long press for 5 seconds to activate voice; rotate left and right to operate the installation interface

Call answer button /hang up button (⑥): short press to answer, long press to hang up

Call hang up button (⑦): short press to hang up

Up and down song buttons (⑧ ⑨): Short press to switch the up and down song functions

Cursor movement buttons (⑩ ⑪): ⑩ Short press to move left, long press to move up; ⑪ Short press to right, long press to move down

4.2 Functions of steering wheel buttons



The steering wheel is only for a call answering and hanging up: short press