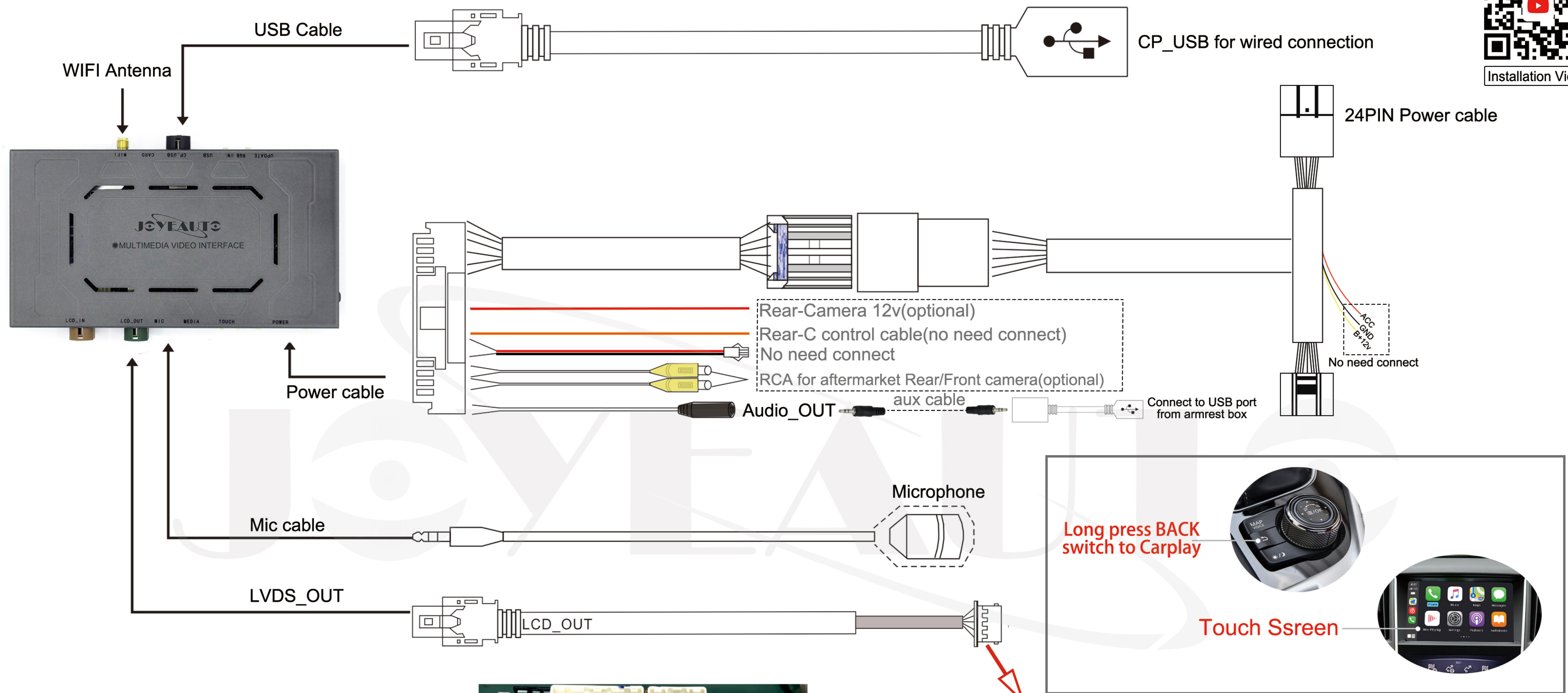
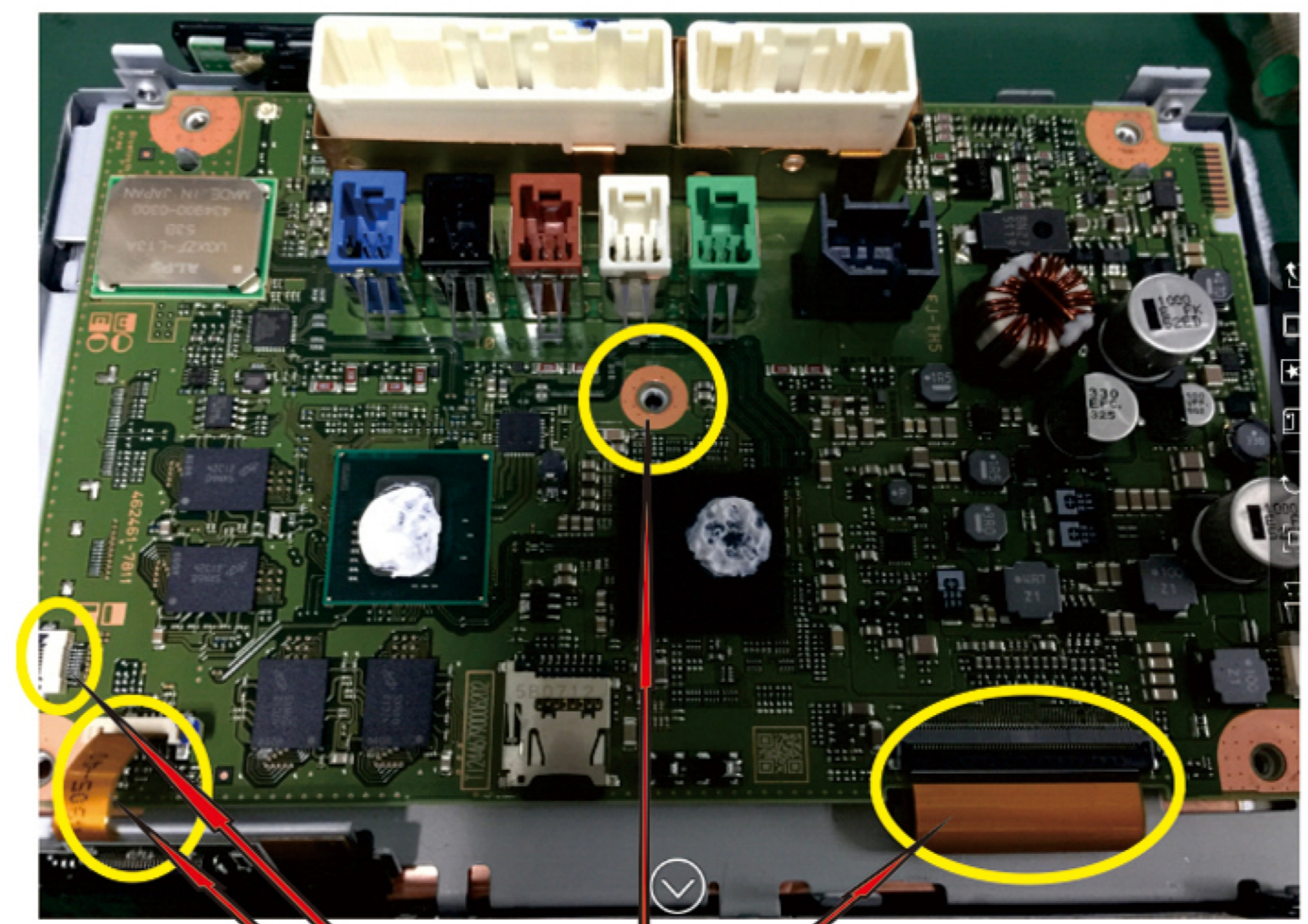


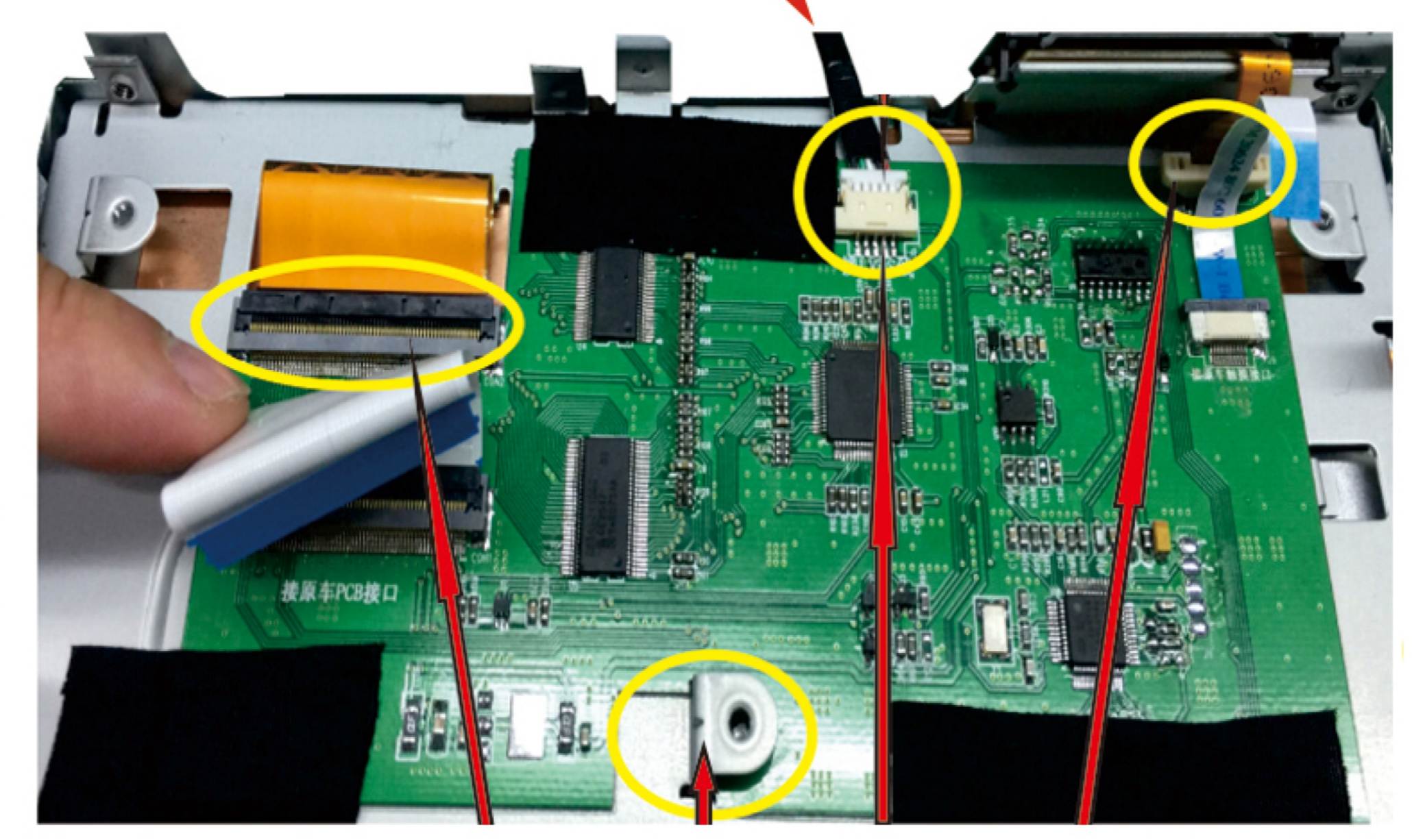
Infiniti Wireless CarPlay Installation Diagram



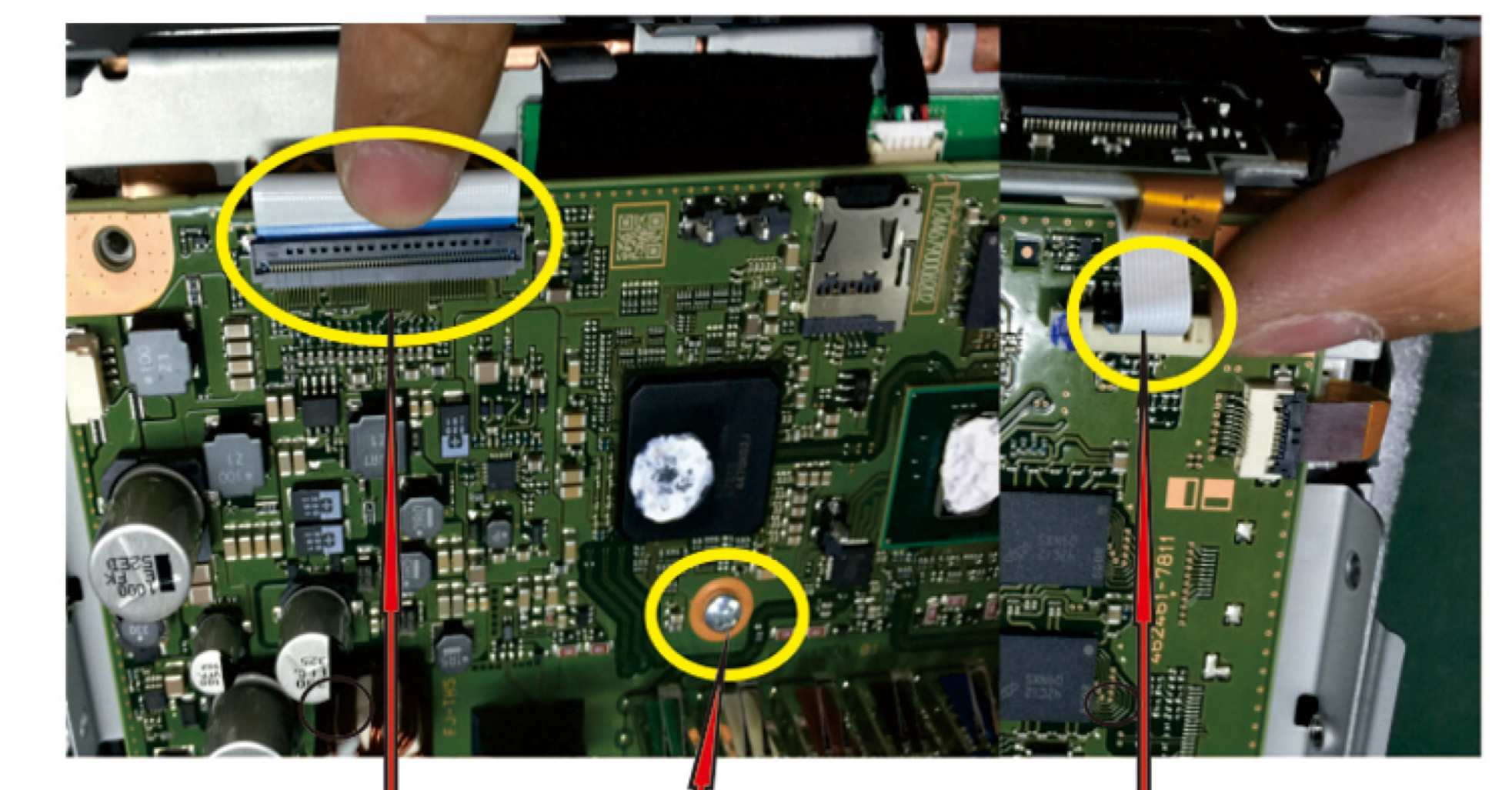
Dip Switch	Status	Description
4	ON	Reverse guideline OFF
	OFF	Reverse guideline ON
8	ON	Original Rear Camera
	OFF	Aftermarket Rear Camera
1,2,3,5,6,7 no function, set all OFF.		



1, Open the back cover of the screen, remove the screws in the middle of the board and untie the three cables to remove the board first

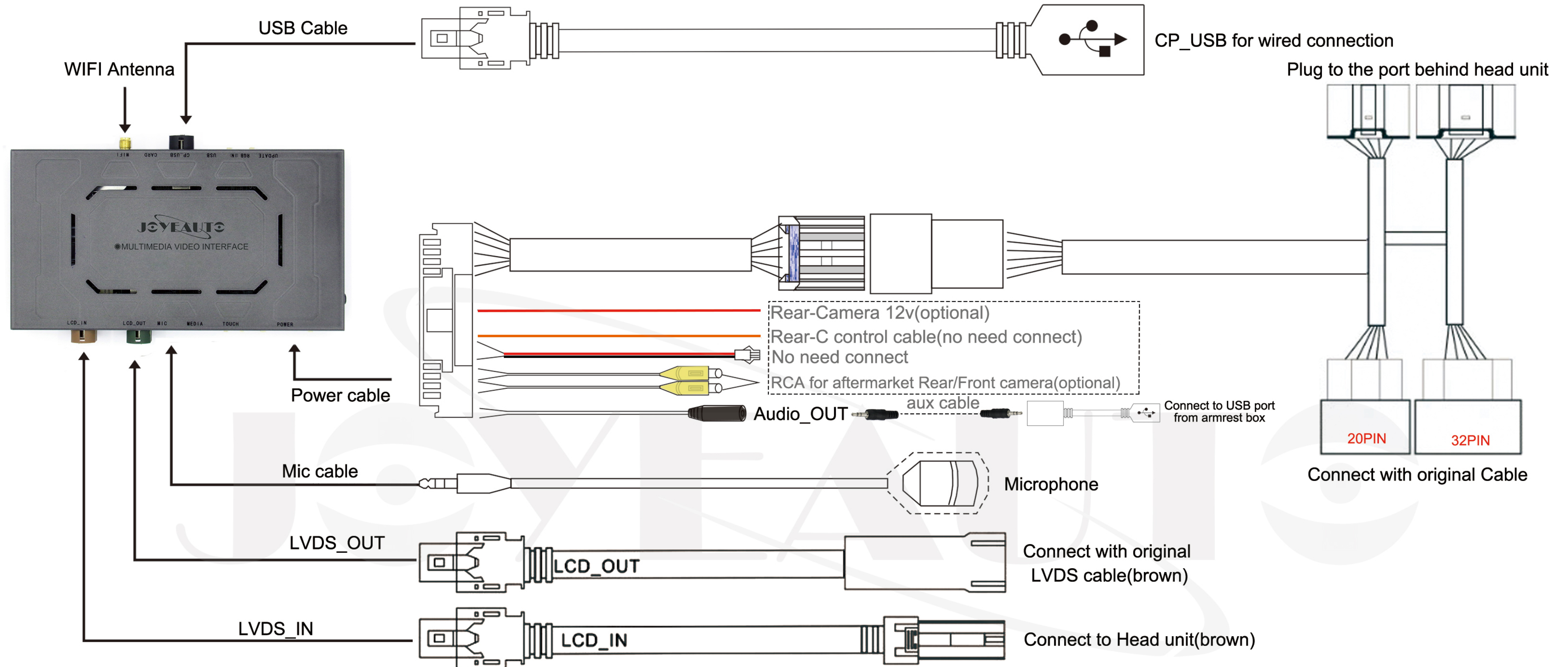


2, Install the screen switch board on the back of the screen docking the 10P touch line, 60P screen cable and LVDS line (note the LVDS outlet position).
3. The corresponding card of the board is clamped at the bottom of the middle screw bracket, and it can be fixed by adding a little acetate tape. (Note that an insulating spacer needs to be added to the bottom of the board)

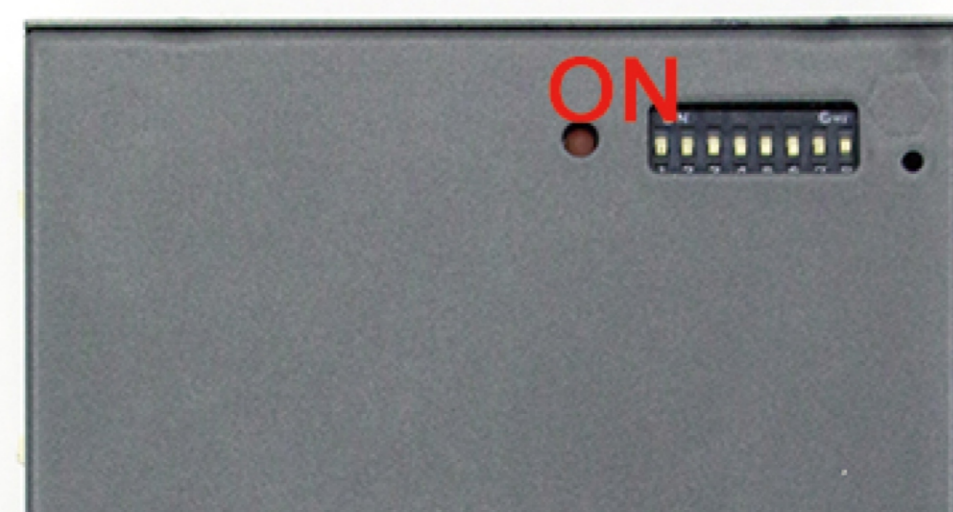


4, Restore the original car board, lay the middle screws, and insert the 60P and 12P cables into the corresponding original car seat.

Infiniti Q70/QX60 Wireless CarPlay Installation Diagram



Dip Switch	Status	Description
2	ON	Touch correction
	OFF	Retrun OFF after correct
4	ON	Reverse guideline OFF
	OFF	Reverse guideline ON
8	ON	Original Rear Camera
	OFF	Aftermarket Rear Camera
1,3, 5,6, 7 all set OFF.		



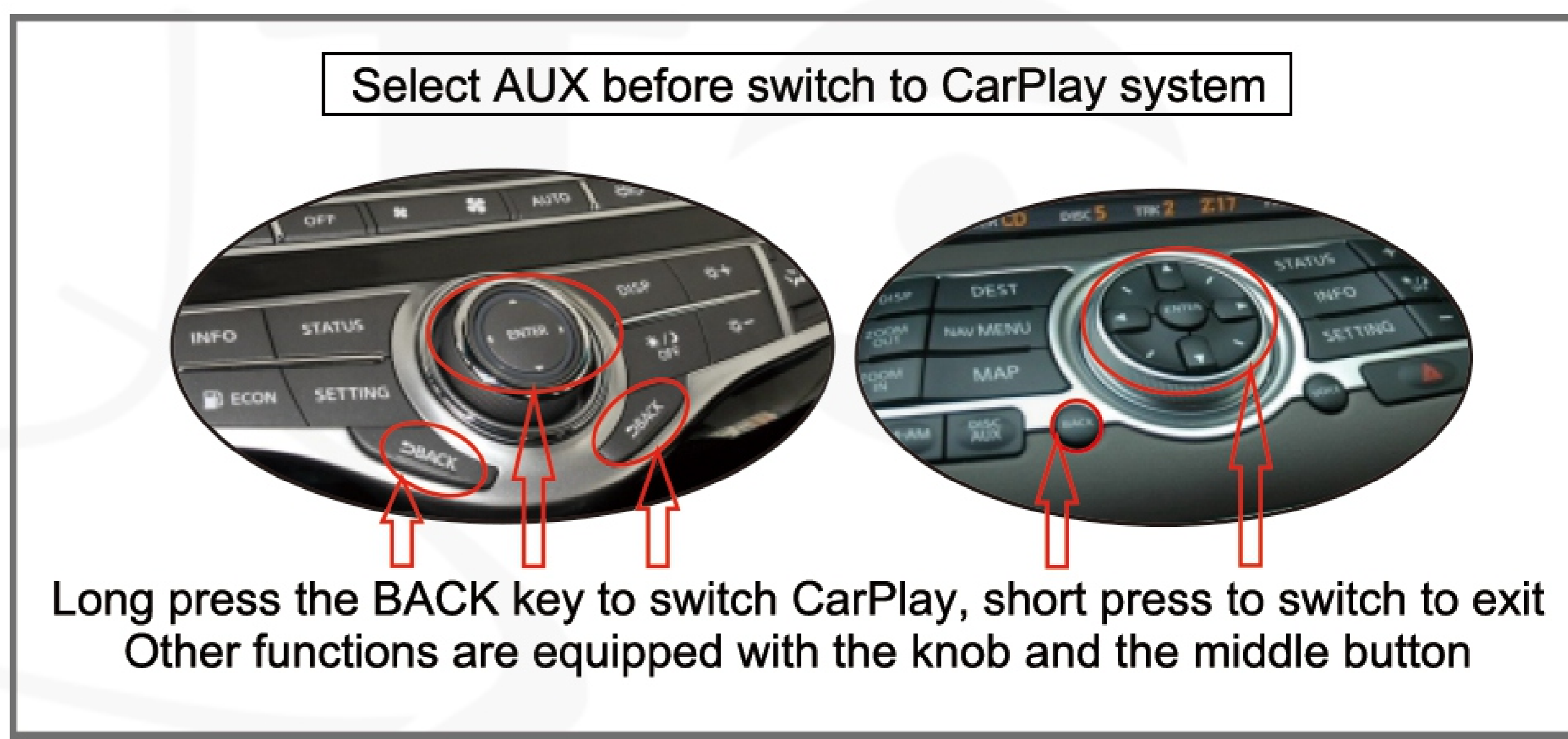
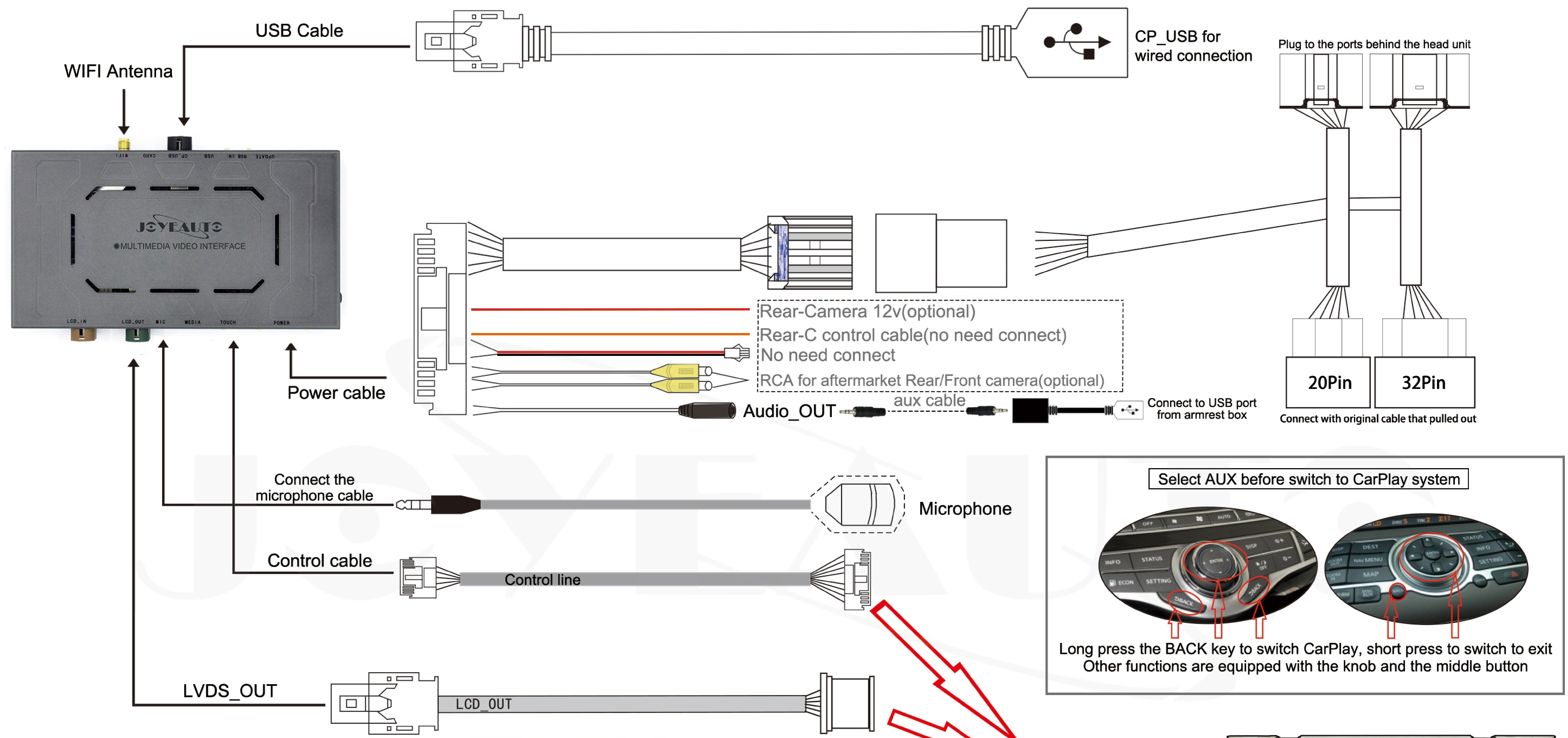
Original Knob Controls

Long press "BACK" switch to CarPlay

Touch Ssreen

Select AUX before switch to CarPlay

Infiniti G35/FX35/EX35 Wireless CarPlay Installation Diagram

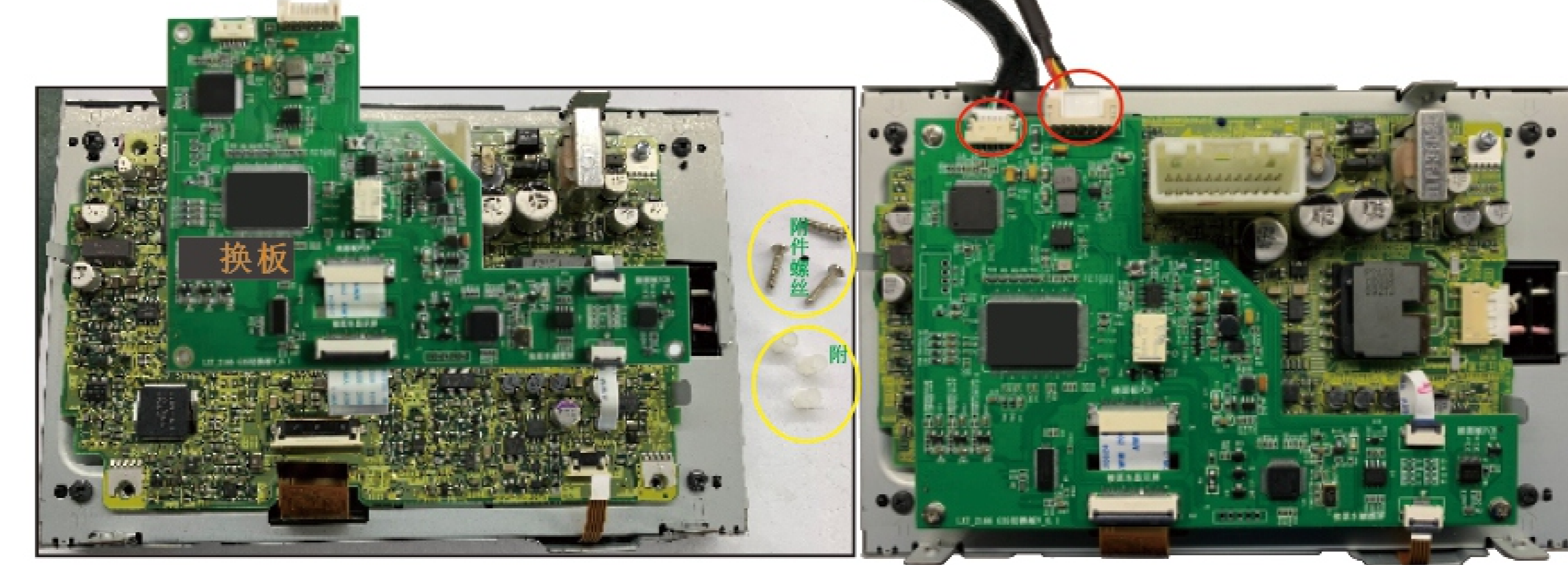


Dip Switch	Status	Description
3	ON	For G35/Q70
	OFF	no function
4	ON	Reverse guideline OFF
	OFF	Reverse guideline ON
8	ON	Original Rear Camera
	OFF	Aftermarket Rear Camera

1,2, 5,6, 7 all set OFF.



1, Unscrew 4pcs screws to open the back cover



- 2, Unscrew 3pcs PCB screws, Unplug the display and touch screen ribbon cable.
- 3, Connect the external kit PCB board (with 30PIN and 8PIN ribbon cable), then fix it by three glue column and screws. (Confirm the ribbon cable connect correct and well enough)
- 4, Connect the control cable and LVDS-OUT with the PCB board (be aware of the LVDS cable two bumps facing up)



5, Finally assemble back the back cover, be aware of the VLDS and control cable outlet location

